

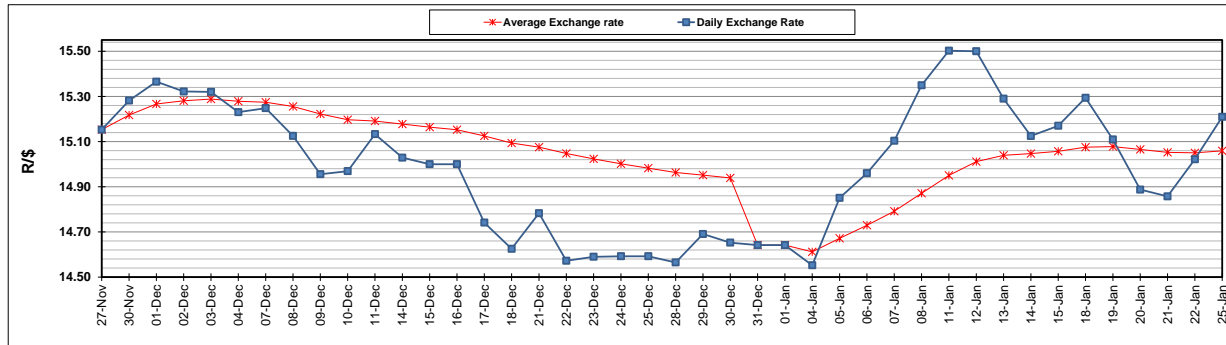
	PETROL 95 ULP	PETROL 93 ULP & LRP	DIESEL 0.05%	DIESEL 0.005%	ILL. PAR.
GAUTENG PUMP PRICE (SA c/l) AS FROM 06/01/2021	1,486.000	1,469.000	-	-	-
WHOLESALE PRICE (SA c/l) AS FROM 06/01/2021	-	-	1,301.420	1,301.820	739.688
SINGLE NATIONAL MAXIMUM RETAIL PRICE	-	-	-	-	930.000
BASIC FUEL PRICE - 25/01/2021 (SA c/l)	608.272	601.419	594.540	598.358	578.145
PRESS RELEASE CONTRIBUTION TO BFP 06/01/2021 - 25/01/2021 (SA c/l)	519.170	512.170	541.630	543.030	527.128
UNIT OVER/(UNDER) RECOVERY - 25/01/2021 (SA c/l)	(89.102)	(89.249)	(52.910)	(55.328)	(51.017)
AVERAGE BASIC FUEL PRICE 31/12/2020 - 25/01/2021	590.331	583.333	587.469	589.485	575.000
AVERAGE UNIT OVER/(UNDER) RECOVERY 31/12/2020 - 25/01/2021	(80.050)	(80.719)	(58.061)	(58.455)	(60.094)

ANALYSIS MOVEMENT OF AVERAGE OVER/(UNDER) RECOVERY

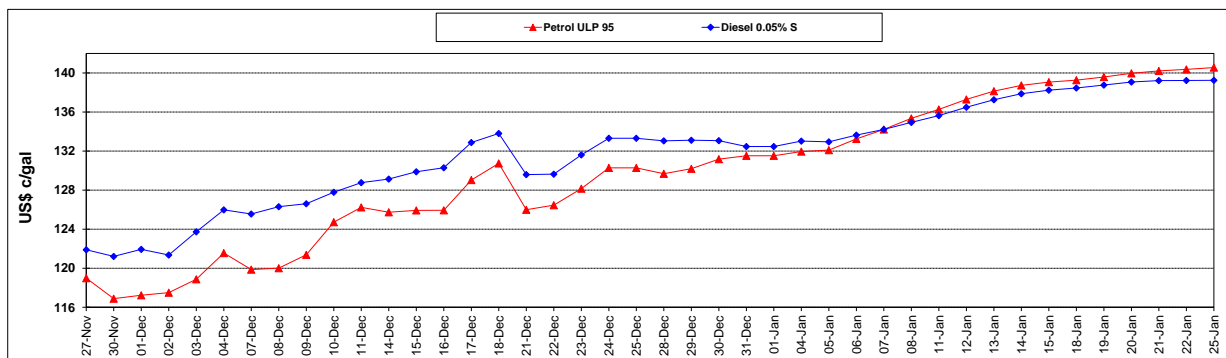
	PETROL 95	PETROL 93	DIESEL 0.05%	DIESEL 0.005%	ILL. PAR.
- MOVEMENT IN INTERNATIONAL PRODUCT PRICES	(75.338)	(76.063)	(53.372)	(53.750)	(55.504)
- MOVEMENT IN EXCHANGE RATE	(4.712)	(4.656)	(4.689)	(4.705)	(4.590)
AVERAGE UNIT OVER/(UNDER) RECOVERY 31/12/2020 - 25/01/2021	(80.050)	(80.719)	(58.061)	(58.455)	(60.094)

R/\$ EXCHANGE RATE - (R/\$15.2095 - 25/01/2021)

EXCHANGE RATE USED IN BASIC FUEL PRICE



INTERNATIONAL PRODUCT PRICES OF BASKET USED IN BASIC FUEL PRICE



BASIC FUEL PRICE IN SA CENTS PER LITRE

